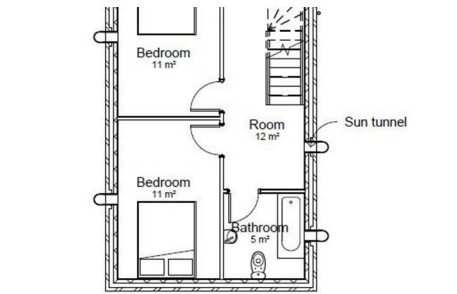
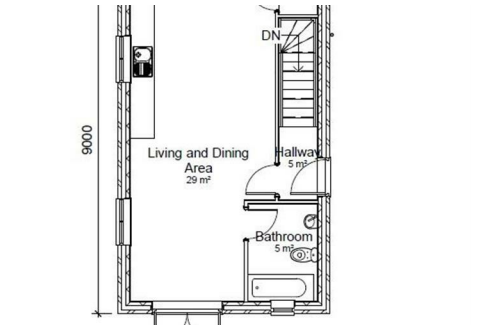
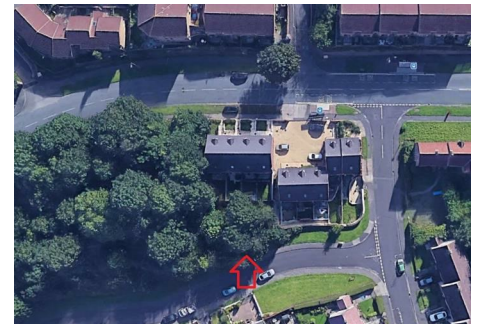




0117 973 6565
 www.hollismorgan.co.uk
 post@hollismorgan.co.uk

hollis
 morgan
 auction



Plot to Rear of, Weston Court Kingsweston Lane, Kingsweston, Bristol, BS11

Auction Guide Price £36,000 +++

Hollis Morgan FEBRUARY AUCTION - A Freehold PARCEL OF LAND with POSITIVE PRE APP to erect a NEW BUILD HOUSE subject to consents.

Plot to Rear of, Weston Court Kingsweston Lane, Kingsweston, Bristol, BS11

ADDRESS

Plot to Rear of, Weston Court, Kingsweston Lane,
Kingsweston, BS11 0JE

FOR SALE BY AUCTION

*** SOLD @ HOLLIS MORGAN RECORD BREAKING
FEBRUARY AUCTION ***

GUIDE £30,000 - £40,000
SOLD @ £36,000

LOT NUMBER 34

Tuesday 25th February 2020

All Saints Church Pembroke Road, Clifton, Bristol BS8
2HY

Legal Pack Room and Registration will be open from
18:15

The sale will begin promptly at 19:00

EXTENDED COMPLETION

Completion is set for 6 weeks or earlier subject to
mutual consent.

VIEWINGS

The land is open for external viewings at all times.

SOLICITORS

Julie Docherty
Barker Son and Isherwood
01264 353411
jdocherty@bsandi.co.uk

ONLINE LEGAL PACKS

LEGAL PACK NOW COMPLETE

Digital Copies of the Online legal pack can be
downloaded Free of Charge.

Please visit the Hollis Morgan Website and select the
chosen lot from our Current Auction List.

Follow the RED link to "Download Legal Packs" For the
first visit you will be required to register simply with your
email and a password.

Having set up your account you can download legal
packs or if they are not yet available they will
automatically be sent to you when we receive them.

You will be automatically updated by email if any new
information is added.

There will be a note added to the list to confirm
AUCTION PACK NOW COMPLETE when no further
information is due to be added.

*** STAY UPDATED *** By registering for the legal pack
we can ensure you are kept updated on any changes to
this Lot in the build up to the sale.

THE LAND

A Freehold parcel of land to the rear of Weston Court
which has recently been developed into a stylish

scheme of family homes.

The land is accessed via Moor Grove.

Sold with vacant possession.

LOCATION

The land is located on the Kingsweston and Lawrence
Weston borders with The Mall and Cribbs Causeway is
10 minutes away by car, offering everything from health
and beauty to high fashion and Cinema Vue with lots of
parking.

THE OPPORTUNITY

DEVELOPMENT OPPORTUNITY - BUNGALOW

Planning was recently sought by the owner to erect a
two bedroom house.

The application has now been withdrawn (it will now
show on the BCC portal but was given ref 19/05508/F)
so all development is subject to gaining the necessary
consents.

Full details of the withdrawn scheme available to
download with the online legal pack.

POSITIVE PRE APP - REFER TO LEGAL PACK

Summary - The principle of residential development at
this site is acceptable. The site is not subject to any
statutory or non-statutory designations. However, the
northern boundary adjoins Moor Grove Open Space. The
key issues with the proposal appear to be amenity
impact on the rear of the terrace, site drainage, and
trees.

Conclusion - Developing the site for an additional
residential unit is considered acceptable in principle.
However, care should be taken to ensure any planning
application sufficiently addresses concerns in relation to
the design and appearance of the bungalow in the
context of the surrounding buildings, the amenity impact
on the adjacent terrace along with tree and drainage
issues. If these issues can be sufficiently addressed and
the remaining requirements are met then an application
is likely to be supported.

BUYER'S PREMIUM

Please be aware all purchasers are subject to a £1000 +
VAT (£1,200 inc VAT) buyer's premium which is ALWAYS
payable upon exchange of contracts whether the sale is
concluded before, during or after the auction date.

GUIDE PRICE

An indication of the seller's current minimum acceptable
price at auction. The guide price or range of guide prices
is given to assist consumers in deciding whether or not
to pursue a purchase. It is usual, but not always the
case, that a provisional reserve range is agreed between

the seller and the auctioneer at the start of marketing. As the reserve is not fixed at this stage and can be adjusted by the seller at any time up to the day of the auction in the light of interest shown during the marketing period, a guide price is issued. This guide price can be shown in the form of a minimum and maximum price range within which an acceptable sale price (reserve) would fall, or as a single price figure within 10% of which the minimum acceptable price (reserve) would fall. A guide price is different to a reserve price (see separate definition). Both the guide price and the reserve price can be subject to change up to and including the day of the auction.

RESERVE PRICE

The seller's minimum acceptable price at auction and the figure below which the auctioneer cannot sell. The reserve price is not disclosed and remains confidential between the seller and the auctioneer. Both the guide price and the reserve price can be subject to change up to and including the day of the auction.

PRE AUCTION OFFERS

Some properties may be available to buy prior to the auction.

Pre auction offers can only be submitted by completing the OFFER FORM which can be downloaded with the online legal pack - please email the COMPLETED form to – olly@hollismorgan.co.uk.

Please note offers will not be considered until you have VIEWED the property and the COMPLETE LEGAL PACK has been released.

You will be emailed a note to confirm the AUCTION PACK NOW COMPLETE and then offers can be submitted.

In the event of an offer being accepted the property will only be removed from the auction and viewings stopped once contracts have successfully EXCHANGED subject to the standard auction terms and payment of the buyer's premium (£1,200) to Hollis Morgan. Contracts can be signed either via the solicitors or at the Hollis Morgan offices subject to appointment.

GUIDE PRICE

An indication of the seller's current minimum acceptable price at auction. The guide price or range of guide prices is given to assist consumers in deciding whether or not to pursue a purchase. It is usual, but not always the case, that a provisional reserve range is agreed between the seller and the auctioneer at the start of marketing. As the reserve is not fixed at this stage and can be adjusted by the seller at any time up to the day of the auction in the light of interest shown during the marketing period, a guide price is issued. This guide price can be shown in the form of a minimum and maximum price range within which an acceptable sale price (reserve) would fall, or

as a single price figure within 10% of which the minimum acceptable price (reserve) would fall. A guide price is different to a reserve price (see separate definition). Both the guide price and the reserve price can be subject to change up to and including the day of the auction.

SURVEYS AND VALUATIONS

If you would like to arrange a survey or mortgage valuation of this Lot BEFORE the auction please instruct your appointed surveyor to contact Hollis Morgan and we will arrange access for them to inspect the property. Please note that buyers CANNOT attend the surveys and the surveyors are responsible for collecting and returning keys to the Hollis Morgan offices in Clifton.

BIDDING AT THE AUCTION

This property is for sale by public auction and if you intend to bid please bring the following:

- Proof of identity (valid passport or photo driving licence).
- Proof of address (bank statement, recent utility bill, council tax bill or tenancy agreement).
- 10% deposit payment.
- Buyers premium payment.
- Details of your solicitor.

You will need to register to bid – registration will be open from 18:15

Forms can be downloaded and completed beforehand (found in the legal pack) or collected at the auction venue.

TELEPHONE AND PROXY BIDDING

If you cannot attend the auction (although we strongly advise you do) you can make a TELEPHONE or PROXY BID. This authorises the auctioneer to bid on your behalf up to a pre-set limit. Forms and relevant conditions are available to download with the online legal pack. A completed form, ID and two cheques (one for the 10% deposit and one for the Buyer's Administration Fee of £1,200) are required by the Auction Department at least two full working days before the auction.

AUCTION BUYERS GUIDE VIDEO

We have short video guides for both buying and selling by Public Auction on the Hollis Morgan Website. If you have any further questions regarding the process please don't hesitate to contact Auction HQ.

WHY HOLLIS MORGAN?

WHY HOLLIS MORGAN?

Hollis Morgan regularly hold the largest property auctions across Bristol and the West Country from our iconic Sale Room in Clifton, since we formed in 2010 we have sold the most £££'s of land and property by Public Auction in the region - EVERY YEAR!

Between 2010 and 2018 we have held 51 auctions, offering 1321 lots and raising over £270k for clients across the region.

Did you know... In 2018 we had the highest % success rate and sold more £££'s of Land and Property by auction than all the other Auctioneers in Bristol & North Somerset combined!

TESTIMONIALS

We are very proud of what our past clients have say about us - please visit the Hollis Morgan website to read their testimonials.

CHARITY OF THE YEAR

Hollis Morgan are supporting Bristol Charity All Aboard Watersports as our 2020 Charity of the year with 5% of each Buyers premium being donated.

All Aboard Watersports strive to make it possible for everyone in the local community to join in a range of watersports and water related activities for people with physical, emotional or cognitive disabilities in the historic Bristol City Docks - www.allaboardwatersports.co.uk

In 2019 we were delighted to have raised well £10k for Bristol Zoo by supporting their Bear Wood Project at the Wild Place through events including the Hollis Morgan Opera Picnic and hosting their annual Gala Evening.

Visit the Hollis Morgan Charity page of our Website for further details - www.hollismorgan.co.uk/charity

AUCTION PROPERTY DETAILS DISCLAIMER

Hollis Morgan endeavour to make our sales details clear, accurate and reliable in line with the Consumer Protection from Unfair Trading Regulations 2008 but they should not be relied on as statements or representations of fact and they do not constitute any part of an offer or contract. All Hollis Morgan references to planning, tenants, boundaries, potential development, tenure etc is to be superseded by the information contained in the legal pack. It should not be assumed that this property has all the necessary Planning, Building Regulation or other consents. Any services, appliances and heating system(s) listed have not been checked or tested. Please note that in some instances the photographs may have been taken using a wide angle lens. The seller does not make any representation or give any warranty in relation to the property and we have no authority to do so on behalf of the seller.